

CPH & DPH SERIES

Commercial & Decorative Pedestal Steel Convector

CONVECTORS

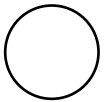


CPH

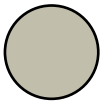
DPH

Ideal Spaces:

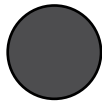
Offices
Hallways
Lobbies
Retail Spaces
Terminals
Commercial /
Institutional Spaces with
Floor-to-Ceiling Windows



White



Beige



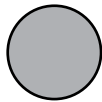
Charcoal Grey



Bronze



Black



Aluminum



Custom and/or Anodized
Colors also Available

- CPH (Commercial) and DPH (Decorative); ideal for primary, secondary or supplemental heat where wall mounting is not viable
- Perfect for under-the-window heat loss and condensation prevention
- Durable front cover constructed of 16-gauge steel (optional 14-gauge available)
- Pedestal-mounted design; bottom inlet - top outlet
- Units may contain 1-3 heating elements that yield a broad range of heating capacity (see specifications)
- Optional ¼ in. mesh located under the discharge grille to deter insertion of objects and restriction of airflow
- Blend into any décor with 8 standard color options or custom finishes available upon request
- Units can be mounted from wall-to-wall or as discrete units in standard lengths of 28 in. to 10 ft.
- Optional built-in controls include: line voltage thermostat (SPST or DPST); power on/off switch; power relay; or transformer relay (see specifications)
- Right- or left-hand entry/wiring flexibility with identical pre-wired junction boxes at either end
- End-to-End wire-way provided for ease of wiring; and rated per the NEC conduit size and rating codes. Please consult factory for proper sizing and specifications
- Easy connection of supply wiring from bottom, rear or end, as well as multiple wiring of adjacent heaters from one entry point
- For service, all internal parts are accessible by removing cover



CPH & DPH SERIES

Commercial & Decorative Pedestal Steel Convector

5 1/2" x 3" — Single Element

Lengths

Length	28"	3'	4'	5'	6'	8'	10'
Shipping Weight	11 lbs	15 lbs	18 lbs	25 lbs	29 lbs	38 lbs	47 lbs

NOTE: All models are NON-STOCK, MADE-TO-ORDER. When ordering, specify quantity, catalog number, voltage, wattage, optional controls, and color. Consult sales representative for lead times.

Watts per Ft.*

125	188
250	

*Specs vary by length. Refer to the submittal sheet for full details.

Voltages*

120	208	240
277	347	600

7" x 5" — Multiple Elements

Available Length

Length	28"	3'	4'	5'	6'	8'	10'
Shipping Weight	11 lbs	15 lbs	18 lbs	25 lbs	29 lbs	38 lbs	47 lbs

NOTE: All models are NON-STOCK, MADE-TO-ORDER. When ordering, specify quantity, catalog number, voltage, wattage, optional controls, and color. Consult sales representative for lead times.

Watts per Ft.*

1 Element*	125	188	250
2 Elements*	375	500	
3 Elements*	564	625	750

*Specs vary by length. Refer to the submittal sheet for full details.

Voltages*

Single Phase*	208	240	277
	347	600	
Three Phase*	208	240	600

Optional Accessories:

CATALOG NO.			COMPATIBLE WITH					
CPH SERIES	DPH SERIES	DESCRIPTION	CPH SERIES	DPH SERIES	SHIP WT.			
BLANK SECTIONS	CPH05BL21	DPH05BL21	CPH05A Heaters	DPH05A Heaters	28-Inch Blank Section	10 lbs		
	CPH05BL31	DPH05BL31			3-Foot Blank Section	13 lbs		
	CPH05BL41	DPH05BL41			4-Foot Blank Section	17 lbs		
	CPH05BL51	DPH05BL51			5 Foot Blank Section	21 lbs		
	CPH05BL61	DPH05BL61	CPH05A Heaters	DPH05A Heaters	6-Foot Blank Section	25 lbs		
					8-Foot Blank Section	32 lbs		
					10-Foot Blank Section	42 lbs		
	CPH07BL21	DPH07BL21	CPH07A Heaters	DPH07A Heaters	28-Inch Blank Section	14 lbs		
					3-Foot Blank Section	18 lbs		
					4-Foot Blank Section	24 lbs		
					5 Foot Blank Section	30 lbs		
	CPH07BL61	DPH07BL61	CPH07A Heaters	DPH07A Heaters	6-Foot Blank Section	36 lbs		
					8-Foot Blank Section	48 lbs		
					10-Foot Blank Section	60 lbs		
PEDESTAL LEG KITS	PHB052	PHB052	Legs must be ordered with CPH05A Heaters/Blanks	Legs must be ordered with DPH05A Heaters/Blanks	Pedestal Leg Kit for 2, 3 & 4 ft. units (quantity 3)	3 lbs		
	PHB053	PHB053			Pedestal Leg Kit for 5, 6 & 8 ft. units (quantity 3)	4 lbs		
	PHB054	PHB054			Pedestal Leg Kit for 10 ft. unit (quantity 4)	5 lbs		
	PHB072	PHB072	Legs must be ordered with CPH07A Heaters/Blanks	Legs must be ordered with DPH07A Heaters/Blanks	Pedestal Leg Kit for 2, 3 & 4 ft. units (quantity 2)	4 lbs		
					PHB073	PHB073	Pedestal Leg Kit for 5, 6 & 8 ft. units (quantity 3)	5 lbs
					PHB074	PHB074	Pedestal Leg Kit for 10 ft. unit (quantity 4)	7 lbs
END CAPS	RIGHT	CSH05ECR	CPH05A/07A Heaters/Blanks	DPH05A/07A Heaters/Blanks	Right Hand End Cap	1 lbs		
		CSH07ECR			DSH07ECR	Right Hand End Cap	1 lbs	
	LEFT	CSH05ECL			DSH05ECL	Left Hand End Cap	1 lbs	
		CSH07ECL			DSH07ECL	Left Hand End Cap	1 lbs	

All steel convectors come standard with end caps. All pedestal style steel convectors come standard with pedestals. Outlet Mesh: Price per foot. 14-Gauge Front Cover: add 10% to heater price. Standard color included in base price. Other colors available. See paint policy page for information on custom paint colors. If color is not specified, front covers will be Beige. Back, grille, and accessories will be statuary bronze. When ordering, specify heater catalog number, voltage, phase, suffix catalog number for built-in controls, color, and options. Specify color for pedestal legs.

See Convector Heater Controls page for Optional Controls.

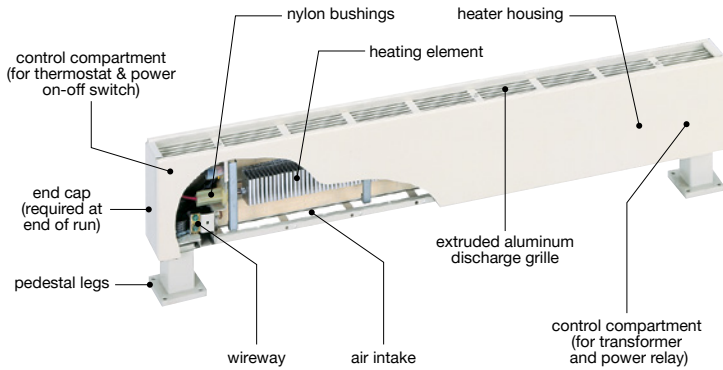
CPH & DPH SERIES

Commercial & Decorative Pedestal Steel Convector

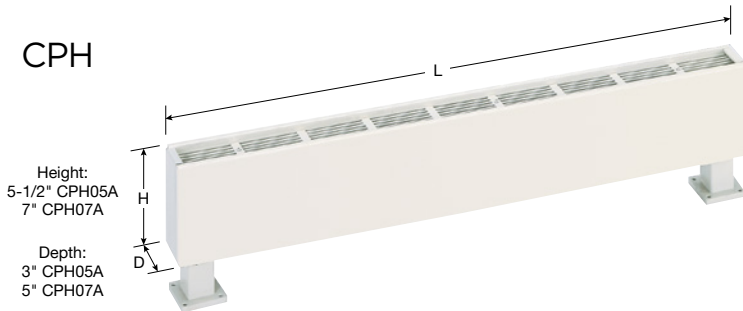
Scan the QR code to access additional specs and features



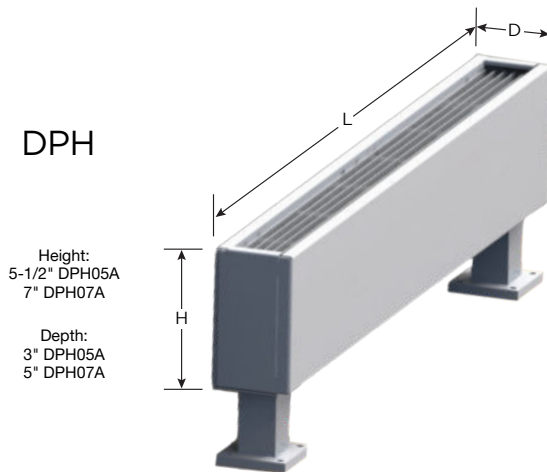
Dimensions and Clearances:



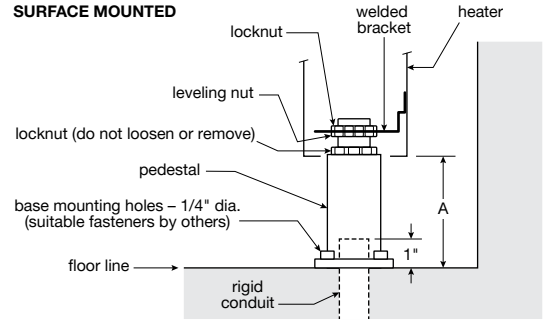
CPH



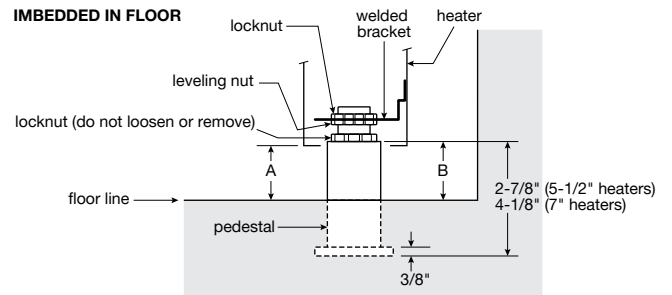
DPH



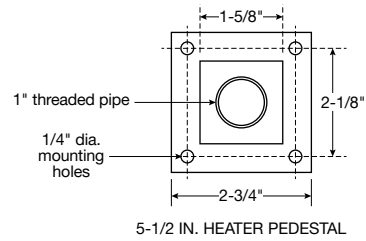
SURFACE MOUNTED



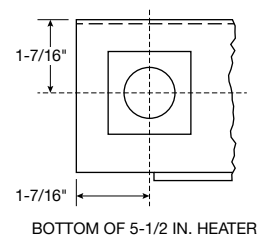
IMBEDDED IN FLOOR



PEDESTAL DETAILS



PEDESTAL LOCATION



PEDESTAL DETAILS

