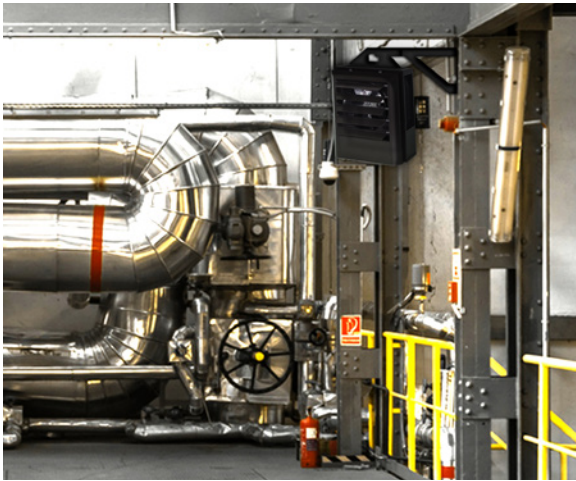


# HUHHA SERIES

## Unit Heater

# UNIT HEATERS



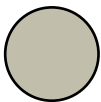
### Technical Specifications:

Temp Range: 40°-90°F

CFM: 350-3000

### Ideal Spaces:

Factories  
Warehouses  
Garages  
Stairwells  
Shipping Docks  
Power Stations  
Mechanical Rooms



Beige



Bronze

- › Wide range of optional control kits are field-installable, increasing the unit's adaptability to specification market
- › Small- to medium-case construction is 20-gauge steel with larger cabinet 18-gauge steel; completely enclosed fan motor
- › Advanced pull-through air flow design draws air across heating element for even air distribution and cooler element operation
- › Specially designed venturi outlet to meet required additional air throw in vertical position
- › Branch circuit fusing (when required)
- › Optional fan-only switch for air movement with no heat
- › 1- or 3-phase wiring on 5 kW through 10 kW 208/240V and 15 kW 208V units (field-interchangeable)
- › Aluminum-finned, copper-clad steel sheath heating element extends life due to cooler sheath temperature and faster heat dissipation
- › 24V control transformer standard on most models, providing safer and more accurate means of temperature control. 3 kW and 5 kW, 208-277V, have line voltage controls as standard (24V control available on made-to-order basis)
- › Automatic reset linear thermal cut-out, capillary type, provides protection over entire length of element areas (manual reset protection available on made-to-order basis)
- › No piping flues, valves or traps needed for installation
- › Individual stainless steel adjustable louvers to direct air flow



# HUHAA SERIES

## Unit Heater

### Models & Specifications:

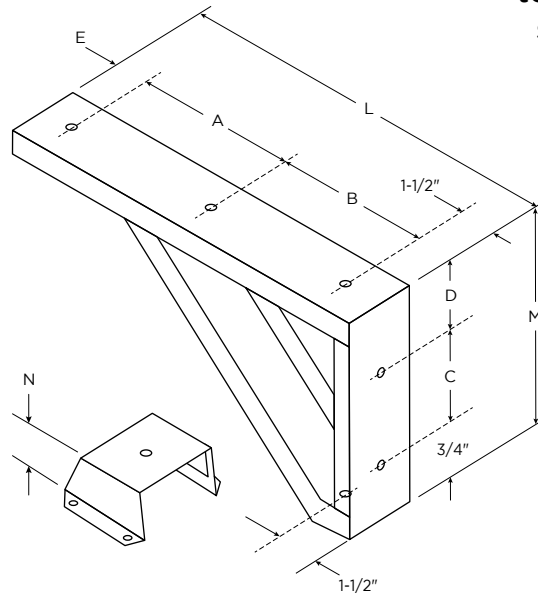
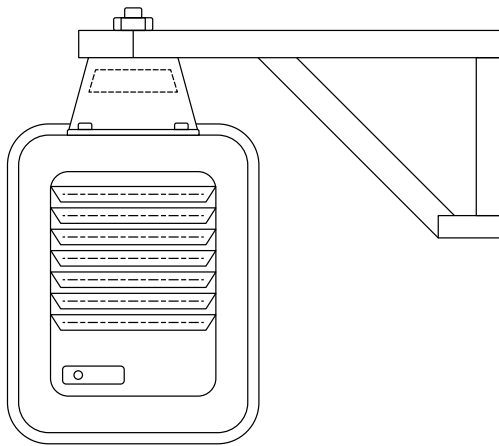
ITEM INFORMATION			ELECTRICAL DATA						AIR DELIVERY DATA FAN MOTOR DATA		
CATALOG NO.	UPC	VOLTS	PHASE	KW	AMPS	BTU/HR.	CONTROL VOLT	CFM	SHIP WT:		
◆ HUHAA320	685360036885	208	1	3	14.5	10	208	350	27 lbs		
◆ HUHAA520	685360036977	208	1-3	5	24	17	208	350	27 lbs		
◆ HUHAA720	685360037011	208	1-3	7.5	36	26	24	650	38 lbs		
◆ HUHAA1020	685360036731	208	1-3	10	48	34	24	650	38 lbs		
◆ HUHAA1520	685360036779	208	1-3	15	72	51	24	910	53 lbs		
◆ HUHAA324	685360036892	208/240	1-3	2.2/3.0	11.0/12.5	8/10	208/240	350	27 lbs		
◆ HUHAA524	685360036984	208/240	1-3	3.7/5.0	18.0/21.0	13/17	208/240	350	27 lbs		
◆ HUHAA724	685360037028	208/240	1-3	5.6/7.5	27.0/31.3	19/26	24	650	38 lbs		
◆ HUHAA1024	685360036748	208/240	1-3	7.5/10.0	36.0/42.0	26/34	24	650	38 lbs		
◆ HUHAA1524	685360036786	208/240	3	11.2/15.0	31.3/36.1	38/51	24	910	53 lbs		
◆ HUHAA327	685360036908	277	1	3	11	10	277	350	27 lbs		
◆ HUHAA527	685360036991	277	1	5	18	17	277	350	27 lbs		
◆ HUHAA727	685360037035	277	1	7.5	27	26	24	650	38 lbs		
◆ HUHAA348	685360036915	480	3	3	3.6	10	24	350	27 lbs		
◆ HUHAA548	685360037004	480	3	5	6	17	24	350	27 lbs		
◆ HUHAA748	685360037042	480	3	7.5	9	26	24	650	38 lbs		
◆ HUHAA1048	685360036762	480	3	10	12	34	24	650	38 lbs		
◆ HUHAA1548	685360036793	480	3	15	18	51	24	910	53 lbs		
● HUHAA2020	685360036809	208	3	20	56	68	24	1320	60 lbs		
● HUHAA2024	685360036816	208/240	3	15.0/20.0	41.2/48.0	51/68	24	1320	60 lbs		
● HUHAA2048	685360036823	480	3	20	24	68	24	1320	60 lbs		
● HUHAA2548	685360036847	480	3	25	30	85	24	2100	93 lbs		
● HUHAA3048	685360036878	480	3	30	36	102	24	2100	93 lbs		
● HUHAA4048	685360036939	480	3	40	48	137	24	3000	114 lbs		
● HUHAA5048	685360036960	480	3	50	60.2	171	24	3000	114 lbs		
● HUHAA3020	685360036854	208	3	30	84	102	24	2100	93 lbs		
● HUHAA2524	685360036830	208/240	3	18.7/25.0	52.0/60.0	64/85	24	2100	93 lbs		
● HUHAA3024	685360036861	208/240	3	22.5/30.0	63.0/72.3	77/102	24	2100	93 lbs		
● HUHAA4024	685360036922	208/240	3	30.0/40.0	83.4/96.4	102/137	24	3000	114 lbs		
● HUHAA5024	685360036953	208/240	3	37.5/50.0	104.2/120.4	128/171	24	3000	114 lbs		
● HUHAA1027	685360036755	277	1	10	36	34	24	650	38 lbs		

SKU Legend: ◆ = Popular Products; ● = Extended Offering (Contact your local Marley Sales Representative for typically associated lead times)

\*1-3" phase denotes field convertible to 3-Phase

NOTE: All standard units are supplied with a low voltage control transformer and contactor (24V). Reference the appropriate Bundled Accessory table below for the standard accessories available out of the box with each PRO and PRO+ model.

**Optional Accessories:**



Scan the QR code to access additional specs and features



	3-20 kW	25-50 kW
A	7 1/4"	9 7/16"
B	9 1/2"	14 3/8"
C	7 1/4"	12 1/8"
D	11 5/16"	2 1/16"
E	2 1/4"	3"
L	20 1/2"	28 15/16"
M	9 15/16"	14 15/16"
N	3 1/4"	4 1/2"

**Optional Mounting Brackets:**

	CATALOG NO.	UPC	COMPATIBILITY	SHIP WT.†
<b>Standard</b>	B10	685360152295	HUHAA03-10	8 lbs
	MCB105PK	685360173627	(Master Pack, Five B10 Brackets)	
	B20	685360152301	HUHAA15 & 20	10 lbs
	B30	685360152318	HUHAA25 & 30	13 lbs
	B50	685360152325	HUHAA40 & 50	15 lbs
<b>Ceiling</b>	CMB10	685360152363	3-10 KW units	3 lbs
	CMB20	685360152370	15-20 KW units	4 lbs
	CMB30	685360152387	25-30 KW units	5 lbs
	CMB50	685360152394	40-50 KW units	6 lbs
<b>Vertical Ceiling</b>	VDMB5	685360152455	3-5 KW units	5 lbs
	VDMB20	685360152462	7.5-20 KW units	7 lbs
	VDMB50	685360152479	25-50 KW units	9 lbs
<b>Remote Thermostats</b>	MUHBKT-TST-SM	685360175089	MUH 3-20kw	2 lbs
	MUHBKT-TST-L	685360175096	MUH 25-50kw	2 lbs

**MOUNTING LIMITATIONS:** Unit heaters should not be used in potentially explosive atmospheres. The finish is not intended for direct salt spray exposure in marine applications or the highly corrosive atmospheres of swimming pools, chemical storage bins, etc. Do not install unit heaters above recommended maximum mounting height. Obstructions must not block unit heater air inlet or discharge. Heaters must be mounted at least 7 ft. above the floor to prevent accidental contact with the heating element or fan blade which could cause injury.

**Optional Dust Shields:**

CATALOG NO.	UPC	COMPATIBILITY	SHIP WT.†
JRDS8	685360150697	3-5 KW units	5 lbs
JRDS14	685360150673	15-20 KW units	6 lbs
JRDS19	685360150680	25-50 KW units	10 lbs

**Diffuser Selector Table:**

CATALOG NO.	UPC	COMPATIBILITY	SHIP WT.†
HUHAALDL	685360036632	Louvered Diffuser F	10 lbs
HUHAALDM	685360036649	Louvered Diffuser for 7.5-20KW Units	8 lbs
HUHAALDS	685360036656	Louvered Diffuser for 3 & 5KW Units	5 lbs

**Optional Field-Installed Electrical Controls:**

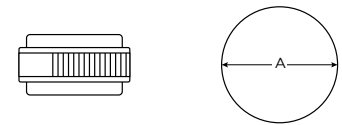
CATALOG NO.	UPC	DESCRIPTION	ELECTRICAL RATING
UHMT1*	685360152417	Single Pole Internal Thermostat-Temp Range: 40°- 85°F	25A @ 120, 240VAC Res. 22A @ 277VAC Res.
UHMT2	685360152424	Two Stage Internal Thermostat-Temp. Range: 40°-85°F	25A @ 120, 240VAC Res. 22A @ 277VAC Res. 125VA
HUHAAFS	685360046372	Internal Summer Fan Switch 250, 480, 600V.A.C. 1.2 OR 3 PH	Pilot Duty 6A, 600VAC Res. 2 HP
HUHAARFS1	685360047089	Remote Summer Fan Switch (Line Voltage)	2 HP, 250-480VAC
HUHAARFS2	685360047096	Remote Summer Fan Switch with Relay (24V Coil-Single Pole Normally Open)	6 AFL, 35 ALR, 250VAC, 60Hz, 3 AFL, 18 ALR, 480VAC, 60Hz
HUHAAHRT	685360046945	Heat Recovery Thermostat with Relay (24V Coil-Single Pole Normally Open) Hi - 120°F, Low - 60°F	6 AFL, 35 ALR, 250VAC, 60Hz 3 AFL, 18 ALR, 480VAC, 60Hz
HUHAADS25	685360047034	Power Disconnect Switch (3-Pole)	30A @ 600VAC, Res.
HUHAADS60	685360047041	Power Disconnect Switch (3-Pole)	80A @ 600VAC, Res.

\*"-S" version available as a suitable alternative  
 NOTE: Any field installed options assembled in the factory require added surcharge. See price book for charges. MPDS60 disconnect switch is not suitable for field installation on 7.5kw and 10kw unit heaters. Visit website or contact your local representative for compatibility details.

**Diffusers for Vertical Mounting:**

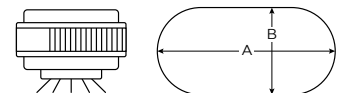
**No Diffuser:**

No diffuser needed where a straight downflow air pattern is required. For maximum air throw, remove louvers. Any of three diffusers can be added to basic heater.



**Louver Diffuser:**

Permits directional (straight line) air flow as in air curtain application over doorways. Rectangular coverage, Louvers can be turned in either direction.



NOTE: Visit website or contact your local representative for additional details

Suggested Controls



Now compatible with SmartSeries Plus when used with 24VAC control transformer!