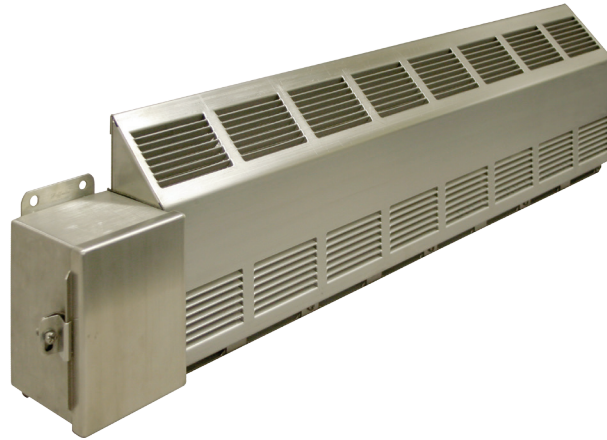


ST SERIES COMMERCIAL SLOPE-TOP CONVECTOR



IDEAL SPACES

STANDARD:

- Offices
- Corridors
- Lobbies
- Maintenance Rooms
- Stairwells
- Other Similar Spaces

NEMA 4X:

- Food Processing Areas
- Dairies
- Breweries
- Locker Rooms
- Stadium Dugouts
- Other Areas Subject to High Pressure Hosing and/or Wet Conditions

COLORS

- Beige
- Charcoal Gray
- Aluminum
- White
- Bronze
- Black
- Stainless Steel

DIMENSIONS

- See specifications



- NEMA 4X model* consists of stainless steel design rated for washdown and corrosive environments
- Designed to mount on wall at sill height (or lower) and can be positioned directly on floor. End of unit can be positioned against adjacent sidewall if desired
- Front cover fabricated from 16-gauge steel; back cover is constructed of 18-gauge steel
- Thermal limit switch with linear type (full length) sensing bulb provides constant protection against overheating from any cause. Switch will automatically reset when normal operating temperatures are restored
- Elements are long-life metal sheath type, anchored to allow for quiet expansion and contraction
- Baked enamel finishes that are compatible with all interior decors
- Attractive 45° sloped top discourages use of heater as a shelf or a “stepstool”
- Units can be mounted from wall-to-wall or as discrete units in standard lengths of 28 in. to 10 ft.
- Optional built-in controls include: thermostat; disconnect switch; transformer relay; and power relay (see specifications)
- Accessories include complete line of matching splice sections, inside and outside corners, and blank sections
- Pre-wired and designed for either right- or left-hand entry with connection of supply wiring from bottom, rear or end, as well multiple wiring of adjacent heaters from one entry point
- All internal parts are accessible by removing cover for easy service access

*Contact sales representative for more information on NEMA 4X models.

www.qmarkmep.com

For Technical Services, Call 800-642-4328

ITEM# QFLY_ST_1217-1

ST SERIES

COMMERCIAL SLOPE-TOP CONVECTOR

MODELS & SPECIFICATIONS											
CATALOG NO.	LENGTH (FT)	NOMINAL WATTS/TT	TOTAL HEATING CAPACITY WATTS	BTU/HR	120V	208V	240V	277V	347V	600V	SHIP WT. (LBS)
ST02	2.3	125	250	853	2.1	1.2	1.0	0.9		-	12
		188	375	1280	3.1	1.8	1.6	1.4	-	-	
		250	500	1706	4.2	2.4	2.1	1.8	1.4		
ST03	3	125	375	1280	3.1	1.8	1.6	1.4	1.1		15
		188	546	1925	4.7	2.7	2.4	2.0	1.6	-	
		250	750	2560	6.2	3.6	3.1	2.7	2.2		
ST04	4	125	500	1706	4.2	2.4	2.1	1.8	1.4		19
		188	750	2560	6.2	3.6	3.1	2.7	2.2	1.3	
		250	1000	3412	8.3	4.8	4.2	3.6	2.9	1.7	
ST05	5	125	625	2133	5.2	3.0	2.6	2.3	1.8	1.0	24
		188	940	3208	7.8	4.5	3.9	3.4	2.7	1.6	
		250	1250	4266	10.4	6.0	5.3	4.5	3.6	2.1	
ST06	6	125	750	2560	6.2	3.6	3.1	2.7	2.1	1.3	26
		188	1125	3840	9.4	5.4	4.7	4.1	3.2	1.9	
		250	1500	5120	12.5	7.2	6.3	5.4	4.3	2.5	
ST08	8	125	1000	3412	-	4.8	4.2	3.6	2.9	1.7	37
		188	1500	5120	-	7.2	6.3	5.4	4.3	2.5	
		250	2000	6824	-	9.6	8.3	7.2	5.8	3.3	
ST10	10	125	1250	4266	-	6.0	5.2	4.5	3.6	2.1	45
		188	1875	6400	-	9.0	7.8	6.8	5.4	3.1	
		250	2500	8532	-	12.0	10.4	9.0	7.2	4.2	

BUILT-IN CONTROLS AND ACCESSORIES		
SUFFIX ADDITION TO CATALOG NO.	OPTIONAL BUILT-IN CONTROLS	RATINGS & DESCRIPTIONS (see note 2)
T*	Single-Pole Thermostat	Rated 24 amps @ 120-240 VAC and 22 amps @ 277 VAC. Pilot duty rating of 125 VA (all voltages). 60-120°F temperature range; adjustable through outlet grille-tamper-resistant
2T*	Double-Pole Thermostat	Rated 24 amps @ 120-240 VAC and 22 amps @ 277 VAC. Pilot duty rating of 125 VA (all voltages). 60-120°F temperature range; adjustable through outlet grille-tamper-resistant. (See Note 1 for amperage restrictions.)
DS*	Power On/Off Switch	Double-pole, rated 20 amp @ 120-277 VAC
TR*	Transformer Relay	Single-pole, low voltage relay with built-in transformer (24 VAC control), rated 25 amps @ 120-240 VAC and 22 amps @ 277 VAC. 17 amps @ 347V , 12 amps @ 600V. Not available on 3-phase heaters
PR*	Power Relay	Single-pole magnetic relay, rated 18 amps @ 120-600 VAC. (See Note 3) Specify control voltage. Rated 24 amps @ 120-240 VAC and 22 amps @ 277 VAC. Pilot duty rating of 125 VA - all voltages (See Note 3)
ICSTIC	2	Inside corner (requires additional wall space - use with ST model only)
ICSTOC	2	Outside corner (requires additional wall space - use with ST model only)
ICSTJS	1	Splice plate wide, coverage gap up to 1/2 in. (use with ST model only)
STO2BS	-	2 ft. Blank Section (unheated section)
STO4BS	-	4 ft. Blank Section (unheated section)
STO6BS	-	6 ft. Blank Section (unheated section)
STO8BS	-	8 ft. Blank Section (unheated section)

NOTE: For 347V and 600V units options T, 2T, DS, are not available. Specify PDT as the suffix for a thermostat.

*Factory built-in. Add suffix to heater catalog number.

1: A control combination is not available on heaters that have an amperage draw which exceeds the rated limit of the lowest rated control.

2: For non-standard controls or combinations, contact factory.

3: Specify holding coil voltage where applicable.

ST SERIES COMMERCIAL SLOPE-TOP CONVECTOR

HOW TO ORDER SLOPE-TOP CONVECTION HEATERS – ST SERIES

PRODUCT		CABINET LENGTH		WATT DENSITY			VOLTS		NO. OF PHASES	CONTROLS	
S	T	0	4	2	5	0	2	4	1	D	S

Series Name

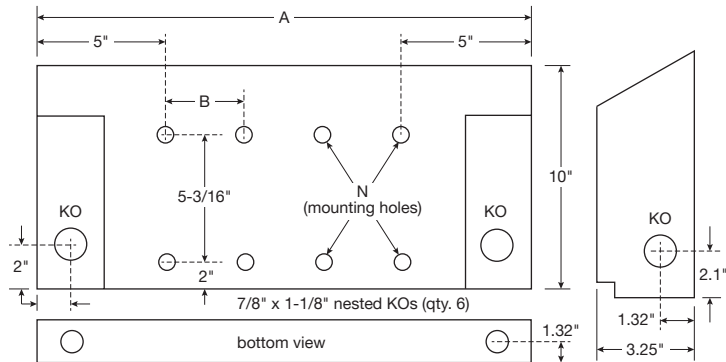
02 = 2.3 ft.
 03 = 3 ft. 07 = 7 ft.
 04 = 4 ft. 08 = 8 ft.
 05 = 5 ft. 09 = 9 ft.
 06 = 6 ft. 10 = 10 ft.

T = Single-Pole Thermostats PE = Pneumatic/
 2T = Double-Pole Thermostats Electric Switch
 DS = Power On/Off Switch 2ST = Two-Stage Thermostat
 TR = Transformer Relay PDT = Pilot-Duty Thermostat
 PR = Power Relay (347V & 600V)

1 = Single-Phase

125 w/ft | 188 w/ft | 250 w/ft

12 = 120V | 20 = 208V | 24 = 240V | 27 = 277V | 34 = 347V | 60 = 600V



DIMENSIONS			
WATTS	A (IN)	B (IN)	N (NO. OF HOLES)
500	28	-	-
750	36	-	-
1000	48	19	2
1250	60	16.68	4
1500	72	20.63	4
2000	96	21.5	6
2500	120	27.5	6