

# CPH & DPH SERIES

## Commercial & Decorative Pedestal Steel Convector

# CONVECTORS

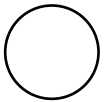


CPH

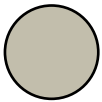
DPH

### *Ideal Spaces:*

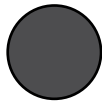
Offices  
Hallways  
Lobbies  
Retail Spaces  
Terminals  
Commercial /  
Institutional Spaces with  
Floor-to-Ceiling Windows



White



Beige



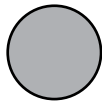
Charcoal Grey



Bronze



Black



Aluminum



Custom and/or Anodized  
Colors also Available

- CPH (Commercial) and DPH (Decorative); ideal for primary, secondary or supplemental heat where wall mounting is not viable
- Perfect for under-the-window heat loss and condensation prevention
- Durable front cover constructed of 16-gauge steel (optional 14-gauge available)
- Pedestal-mounted design; bottom inlet - top outlet
- Units may contain 1-3 heating elements that yield a broad range of heating capacity (see specifications)
- Optional ¼ in. mesh located under the discharge grille to deter insertion of objects and restriction of airflow
- Blend into any décor with 8 standard color options or custom finishes available upon request
- Units can be mounted from wall-to-wall or as discrete units in standard lengths of 28 in. to 10 ft.
- Optional built-in controls include: line voltage thermostat (SPST or DPST); power on/off switch; power relay; or transformer relay (see specifications)
- Right- or left-hand entry/wiring flexibility with identical pre-wired junction boxes at either end
- End-to-End wire-way provided for ease of wiring; and rated per the NEC conduit size and rating codes. Please consult factory for proper sizing and specifications
- Easy connection of supply wiring from bottom, rear or end, as well as multiple wiring of adjacent heaters from one entry point
- For service, all internal parts are accessible by removing cover



# CPH & DPH SERIES

## Commercial & Decorative Pedestal Steel Convector

5 1/2" x 3" — Single Element

### Lengths

| Length          | 28"    | 3'     | 4'     | 5'     | 6'     | 8'     | 10'    |
|-----------------|--------|--------|--------|--------|--------|--------|--------|
| Shipping Weight | 11 lbs | 15 lbs | 18 lbs | 25 lbs | 29 lbs | 38 lbs | 47 lbs |

NOTE: All models are NON-STOCK, MADE-TO-ORDER. When ordering, specify quantity, catalog number, voltage, wattage, optional controls, and color. Consult sales representative for lead times.

### Watts per Ft.\*

|     |     |
|-----|-----|
| 125 | 188 |
| 250 |     |

\*Specs vary by length. Refer to the submittal sheet for full details.

### Voltages\*

|     |     |     |
|-----|-----|-----|
| 120 | 208 | 240 |
| 277 | 347 | 600 |

### 7" x 5" — Multiple Elements

#### Available Length

| Length          | 28"    | 3'     | 4'     | 5'     | 6'     | 8'     | 10'    |
|-----------------|--------|--------|--------|--------|--------|--------|--------|
| Shipping Weight | 11 lbs | 15 lbs | 18 lbs | 25 lbs | 29 lbs | 38 lbs | 47 lbs |

NOTE: All models are NON-STOCK, MADE-TO-ORDER. When ordering, specify quantity, catalog number, voltage, wattage, optional controls, and color. Consult sales representative for lead times.

### Watts per Ft.\*

|             |     |     |     |
|-------------|-----|-----|-----|
| 1 Element*  | 125 | 188 | 250 |
| 2 Elements* | 375 | 500 |     |
| 3 Elements* | 564 | 625 | 750 |

\*Specs vary by length. Refer to the submittal sheet for full details.

### Voltages\*

|               |     |     |     |
|---------------|-----|-----|-----|
| Single Phase* | 208 | 240 | 277 |
|               | 347 | 600 |     |
| Three Phase*  | 208 | 240 | 600 |

### Optional Accessories:

| CATALOG NO.       |                |                       | COMPATIBLE WITH                                 |   |  |                       |        |
|-------------------|----------------|-----------------------|---|---|--|-----------------------|--------|
| CPH SERIES        | DPH SERIES     | DESCRIPTION           | CPH SERIES                                      | DPH SERIES                                      | SHIP WT.   |                       |        |
| BLANK SECTIONS    | CPH05BL21      | DPH05BL21             | CPH05A Heaters                                  | DPH05A Heaters                                  | 28-Inch Blank Section                                | 10 lbs                |        |
|                   | CPH05BL31      | DPH05BL31             |   |   | 3-Foot Blank Section                                 | 13 lbs                |        |
|                   | CPH05BL41      | DPH05BL41             |   |   | 4-Foot Blank Section                                 | 17 lbs                |        |
|                   | CPH05BL51      | DPH05BL51             |   |   | 5 Foot Blank Section                                 | 21 lbs                |        |
|                   | CPH05BL61      | DPH05BL61             | CPH05A Heaters                                  | DPH05A Heaters                                  | 6-Foot Blank Section                                 | 25 lbs                |        |
|                   | CPH05BL81      | DPH05BL81             |   |   | 8-Foot Blank Section                                 | 32 lbs                |        |
|                   | CPH05BL101     | DPH05BL101            |   |   | 10-Foot Blank Section                                | 42 lbs                |        |
|                   | BLANK SECTIONS | CPH07BL21             | DPH07BL21                                       | CPH07A Heaters                                  | DPH07A Heaters                                       | 28-Inch Blank Section | 14 lbs |
|                   |                | CPH07BL31             | DPH07BL31                                       |   |  | 3-Foot Blank Section  | 18 lbs |
|                   |                | CPH07BL41             | DPH07BL41                                       |   |  | 4-Foot Blank Section  | 24 lbs |
|                   |                | CPH05BL51             | DPH05BL51                                       |   |  | 5 Foot Blank Section  | 30 lbs |
|                   |                | CPH07BL61             | DPH07BL61                                       | CPH07A Heaters                                  | DPH07A Heaters                                       | 6-Foot Blank Section  | 36 lbs |
| CPH07BL81         |                | DPH07BL81             | 8-Foot Blank Section                            |   |  | 48 lbs                |        |
| CPH07BL101        | DPH07BL101     | 10-Foot Blank Section | 60 lbs  |   |  |                       |        |
| PEDESTAL LEG KITS | PHB052         | PHB052                | Legs must be ordered with CPH05A Heaters/Blanks | Legs must be ordered with DPH05A Heaters/Blanks | Pedestal Leg Kit for 2, 3 & 4 ft. units (quantity 3) | 3 lbs                 |        |
|                   | PHB053         | PHB053                |   |   | Pedestal Leg Kit for 5, 6 & 8 ft. units (quantity 3) | 4 lbs                 |        |
|                   | PHB054         | PHB054                |   |   | Pedestal Leg Kit for 10 ft. unit (quantity 4)        | 5 lbs                 |        |
|                   | PHB072         | PHB072                | Legs must be ordered with CPH07A Heaters/Blanks | Legs must be ordered with DPH07A Heaters/Blanks | Pedestal Leg Kit for 2, 3 & 4 ft. units (quantity 2) | 4 lbs                 |        |
|                   | PHB073         | PHB073                |   |   | Pedestal Leg Kit for 5, 6 & 8 ft. units (quantity 3) | 5 lbs                 |        |
|                   | PHB074         | PHB074                |   |   | Pedestal Leg Kit for 10 ft. unit (quantity 4)        | 7 lbs                 |        |
| END CAPS          | RIGHT          | CSH05ECR              | CPH05A/07A Heaters/Blanks                       | DPH05A/07A Heaters/Blanks                       | Right Hand End Cap                                   | 1 lbs                 |        |
|                   |                | CSH07ECR              |   |   | Right Hand End Cap                                   | 1 lbs                 |        |
| END CAPS          | LEFT           | CSH05ECL              | CPH05A/07A Heaters/Blanks                       | DPH05A/07A Heaters/Blanks                       | Left Hand End Cap                                    | 1 lbs                 |        |
|                   |                | CSH07ECL              |   |   | Left Hand End Cap                                    | 1 lbs                 |        |

All steel convectors come standard with end caps. All pedestal style steel convectors come standard with pedestals. Outlet Mesh: Price per foot. 14-Gauge Front Cover: add 10% to heater price. Standard color included in base price. Other colors available. See paint policy page for information on custom paint colors. If color is not specified, front covers will be Beige. Back, grille, and accessories will be statuary bronze. When ordering, specify heater catalog number, voltage, phase, suffix catalog number for built-in controls, color, and options. Specify color for pedestal legs.

See Convector Heater Controls page for Optional Controls.

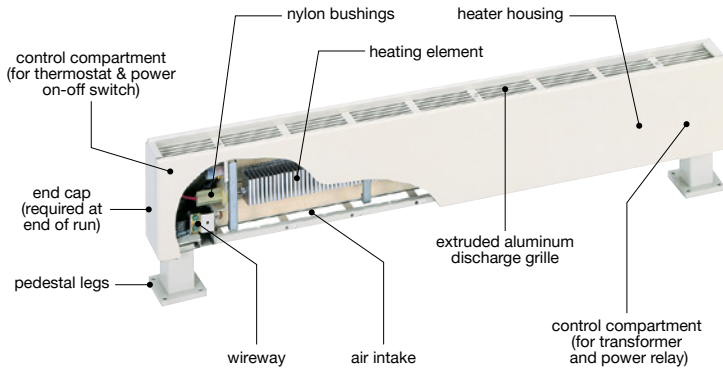
# CPH & DPH SERIES

## Commercial & Decorative Pedestal Steel Convector

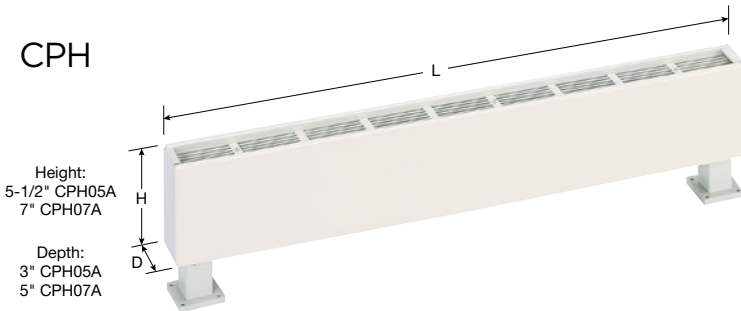
Scan the QR code to access additional specs and features



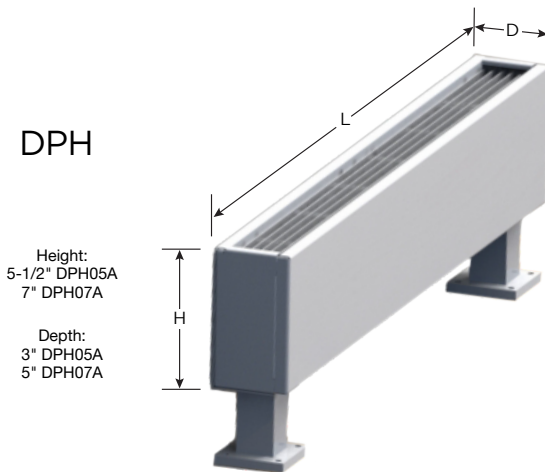
### Dimensions and Clearances:



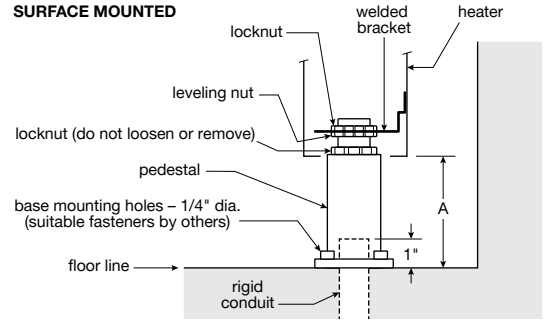
### CPH



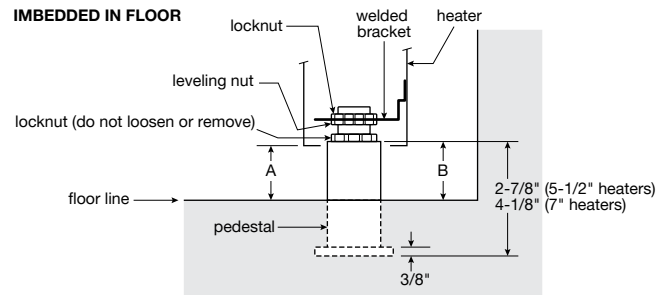
### DPH



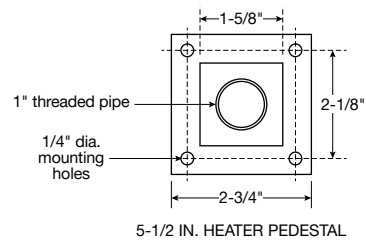
### SURFACE MOUNTED



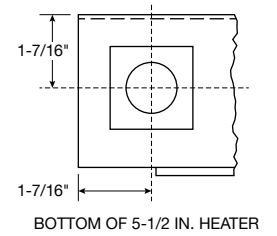
### IMBEDDED IN FLOOR



### PEDESTAL DETAILS



### PEDESTAL LOCATION



### PEDESTAL DETAILS

